

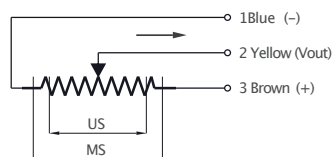
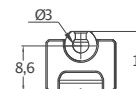
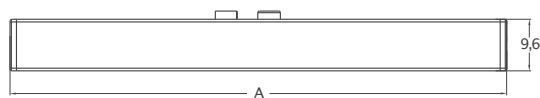
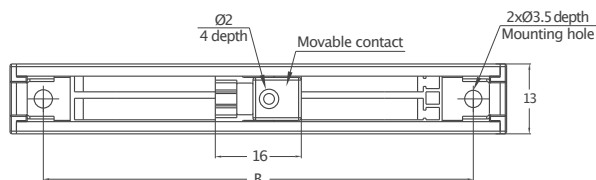
- Measurement range 25 – 150mm
- 30 million movements life
- Special guidance system
- Infinite resolution
- 2 kOhm : 25 – 50 mm
- 5 kOhm : 75 – 150 mm



### Technical Specifications

Measurement stroke	25 – 150mm
Linearity	±%0.1(130–150mm), ±%0.2 (100–125mm), ±%0.5 (≤75mm)
Repeatability	<0.01 mm
Resolution	Infinite
Resistance	2 kOhm : 25 – 50 mm 5 kOhm : 75 – 150 mm
Resistance tolerance	±%20
Load resistance	100 kOhm min.
Recommended wiper current	<1µA
Permissible applied voltage	28 VDC max.
Displacement speed	<5 m/s
Mechanical life	30 million movement
Case diameter	13 mm x 9,6 mm
Case material	Anodized aluminium
Protection level	IP00
Operating temperature	-20°C ... +80°C
Storage temperature	-30°C ... +90°C

### Mechanical Specifications



MSOPH (mm)	25	50	75	100	150
A ±0,5	67,5	92,5	117,5	142,5	192,5
B ±0,5	55	80	105	130	180

### Ordering Procedure

Model	Measurement stroke (mm)	Linearity (%)	Resistance (kOhm)
MSOPH	75	B	2K
MSOPH	25 – 150 mm	A: ±%0.5 (≤75 mm), B: ±%0.2 (100 – 125 mm), C: ±%0.1 (130 – 150 mm)	2 kOhm : 25 – 50 mm 5 kOhm : 75 – 150 mm