

MLPS

Linear Potentiometer

Spring Return

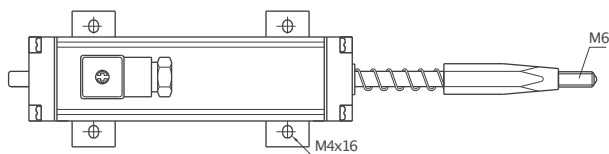
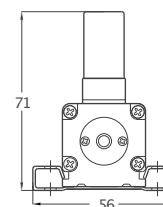
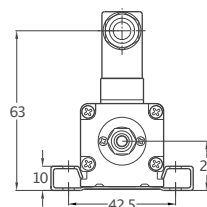
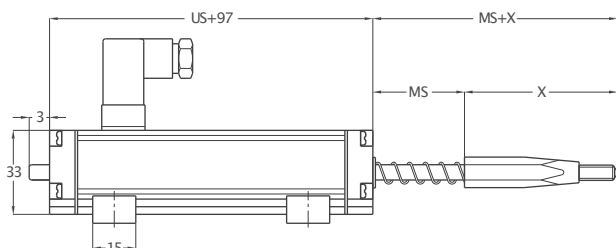
- Measuring range 30 – 150mm
- $\pm 0.1\%$ linearity
- 100million movements life
- $< 0.01\text{mm}$ repeatability
- Infinite resolution



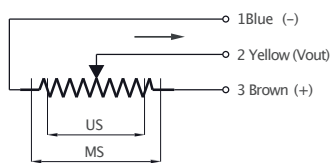
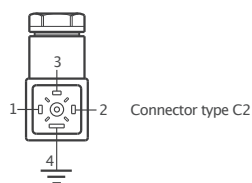
Technical Specifications

Measurement stroke	30 – 150 mm
Linearity	$\pm 0.1\%$ (150–200mm), $\pm 0.2\%$ (75–129mm), $\pm 0.5\%$ (<75mm)
Repeatability	< 0.01 mm
Resolution	Infinite
Resistance	5 kOhm : 30 – 150mm
Resistance tolerance	$\pm 20\%$
Load resistance	100 kOhm min.
Recommended wiper current	$< 1\mu\text{A}$
Permissible applied voltage	28 VDC max.
Electrical connections	4 pin hydraulic type connector
Displacement speed	< 5 m/s
Mechanical life	100million movement
Case diameter	33 mm x 33 mm
Case material	Anodizedaluminium
Rod material	Stainless steel
Rod diameter	$\varnothing 6$ mm
Mechanical fixing	Variable brackets
Protection level	IP 54
Operating temperature	$-20^\circ\text{C} \dots +80^\circ\text{C}$
Storage temperature	$-30^\circ\text{C} \dots +90^\circ\text{C}$

Mechanical Specifications



	MLPS 30	MLPS 50	MLPS 75	MLPS 100	MLPS 150
X	63 mm	68 mm	78 mm	88 mm	108 mm



RTM (mm)	30	50	75	100	125	150
US (Usefull stroke)	30	50	75	100	125	150
MS (Mechanical stroke)	34	54	79	104	129	154
L (Total length)	227	272	332	392	452	512

Ordering Procedure

Model	Measurement stroke (mm)	Linearity (%)	Resistance (kOhm)	Connector
MLPS	100	D	5K	C2
MLPS	30 – 150 mm	A : $\pm 0.5\%$ (<75mm), B : $\pm 0.2\%$ (75–129mm), C : $\pm 0.1\%$ (150–200mm)	5 kOhm : 30 – 150mm	C2 : 4 pin connector